



# PRM Transfer Installation

# PRM Transfer Installation

## Contents

- 1. P6 Integration API Installation ..... 3
- 2. Integration API Database Connection ..... 8
- 3. PRM Transfer Configuration ..... 12
- 4. Login ..... 15

## 1. P6 Integration API Installation

PRM Transfer Utility needs P6 Integration Api installed on the same computer.

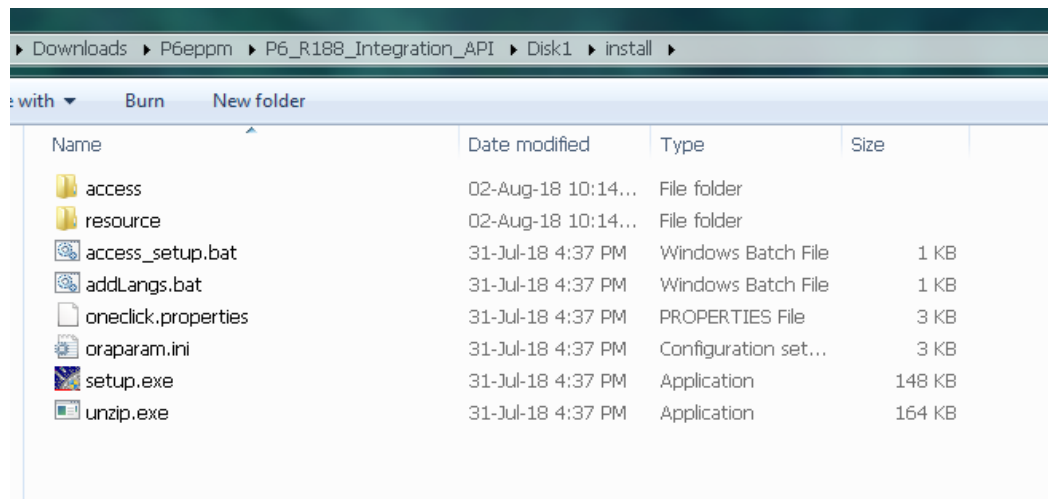
In order to install P6 Integration Api, JAVA JDK needs to be installed first. Obtain JAVA JDK from Oracle.

<https://www.oracle.com/technetwork/java/javase/downloads/java-archive>

Integration API files can be downloaded from Oracle Edelivery.

<https://edelivery.oracle.com>

Download Integration API setup from Edelivery and extract all of the contents to a folder. After extracting run “setup.exe” from Disk1\install.

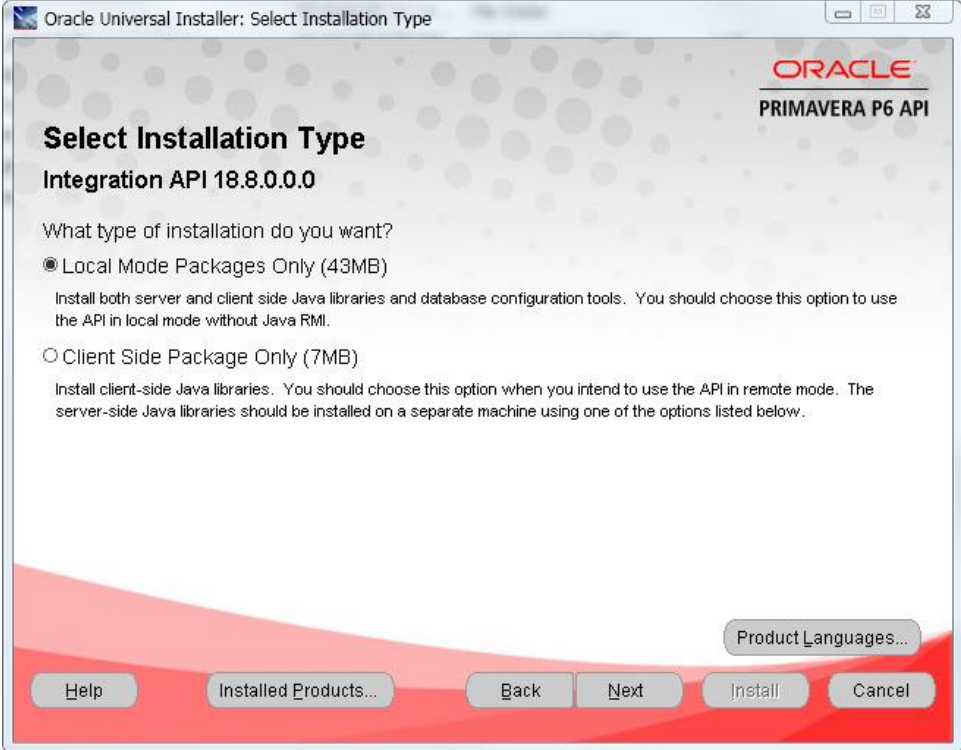


# PRM Transfer Installation

Click "Next" in the Welcome screen.

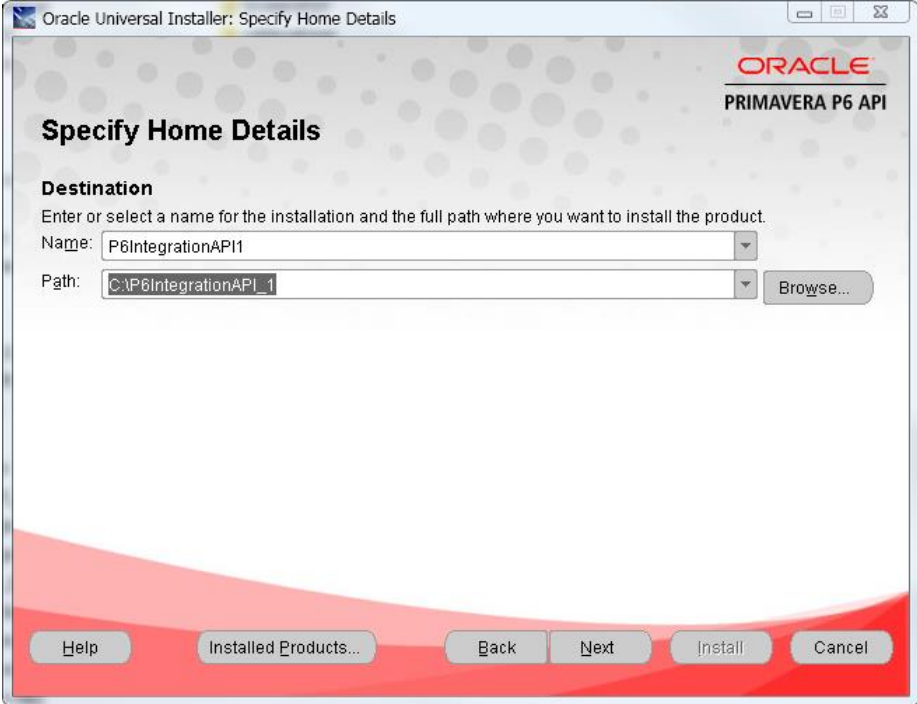


Choose "Local Mode Packages" and click "Next".

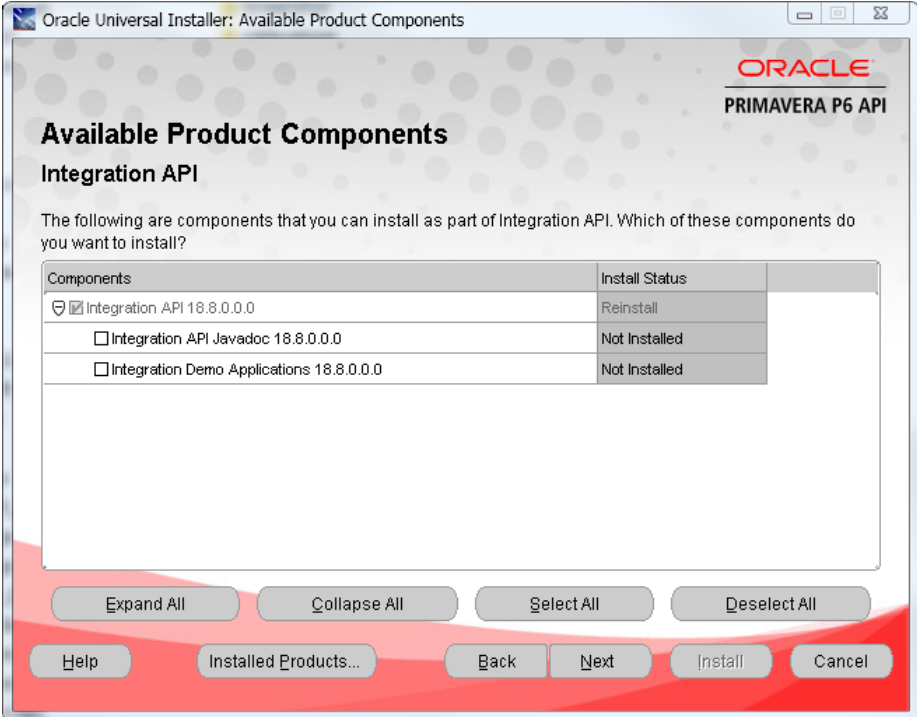


# PRM Transfer Installation

Choose the installation destination and click “Next”.



Click “Next”.

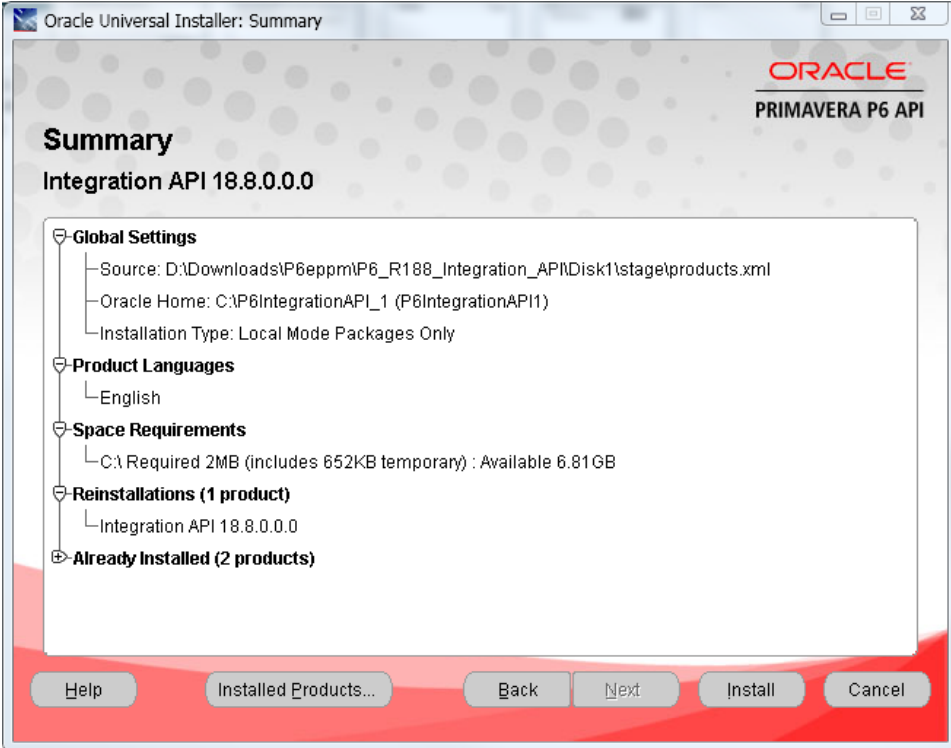


# PRM Transfer Installation

Choose JDK Home Directory and Click "Next".

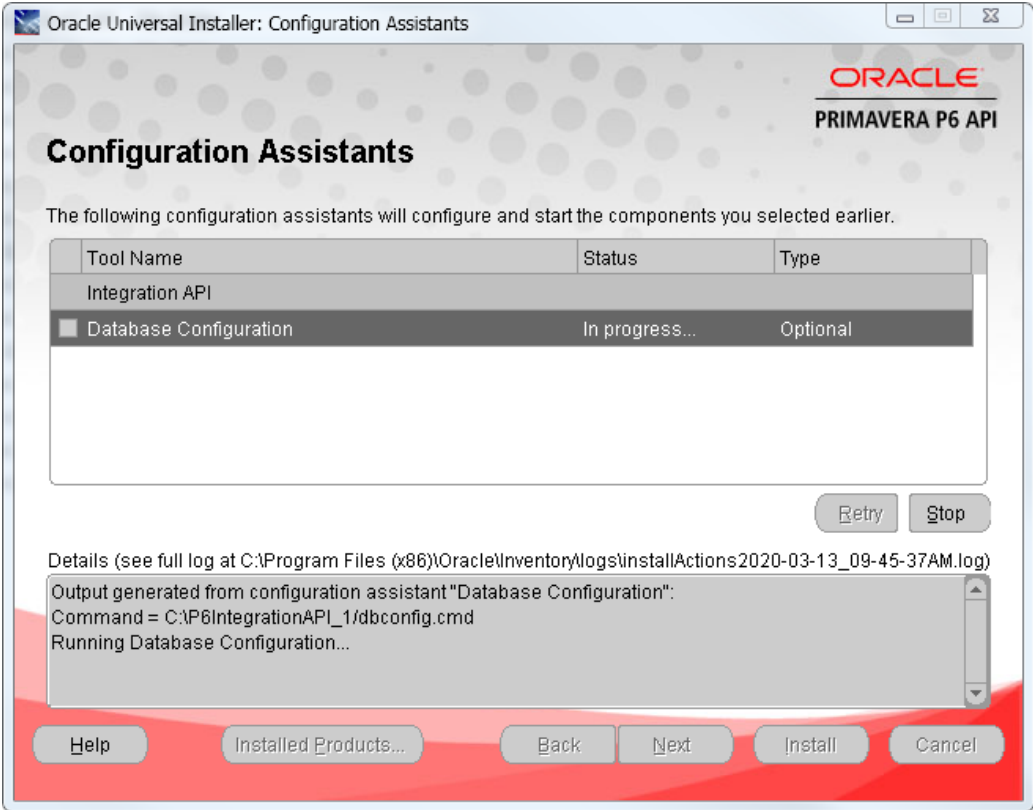


Click "Install".



# PRM Transfer Installation

After the installation database configuration screen will be automatically displayed.



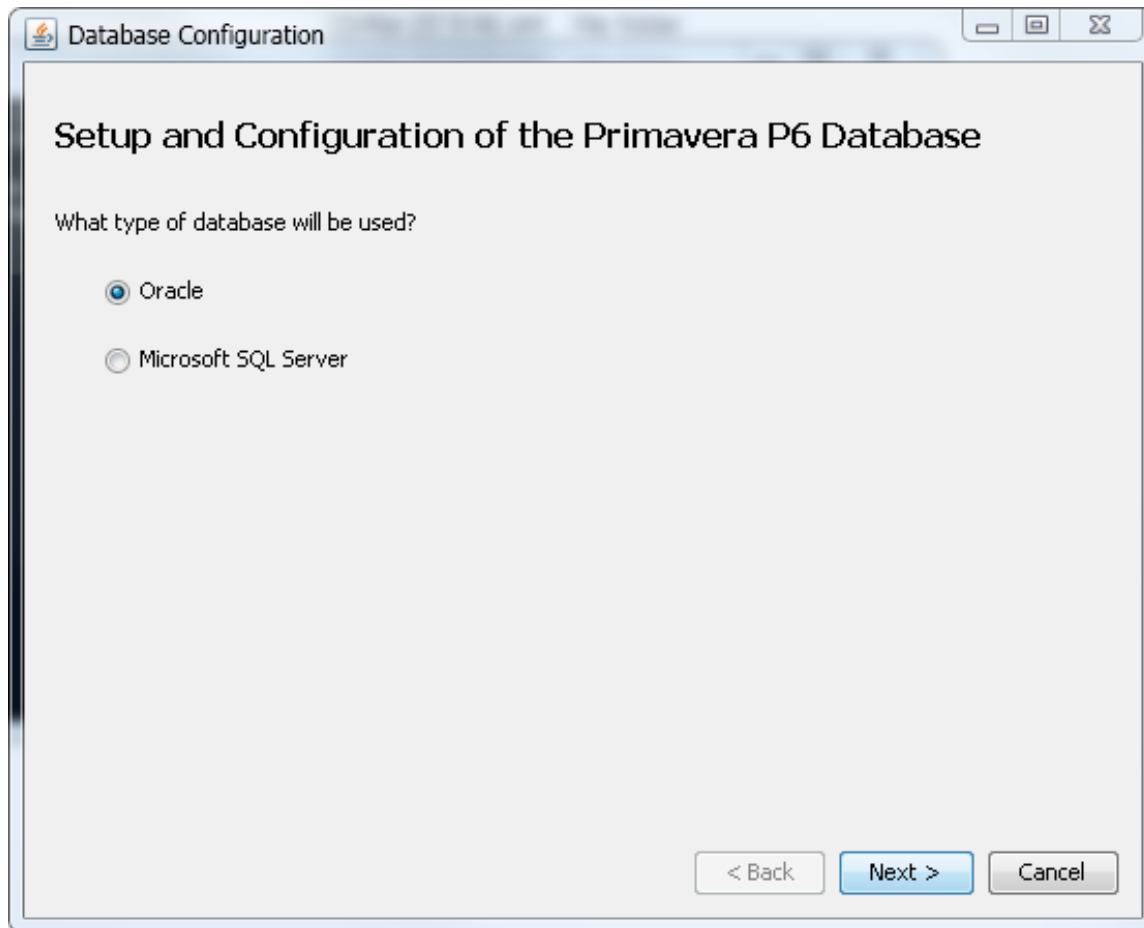
## 2. Integration API Database Connection

Proceed with the configuration from the configuration screen. If the configuration screen does not open automatically, it can be started from installed folder.

(e.g. C:\P6IntegrationAPI\_1).

Run “dbconfig.cmd” from the folder to start the database configuration.

Choose your database type according to database that is used. We will proceed with ORACLE database.





# PRM Transfer Installation

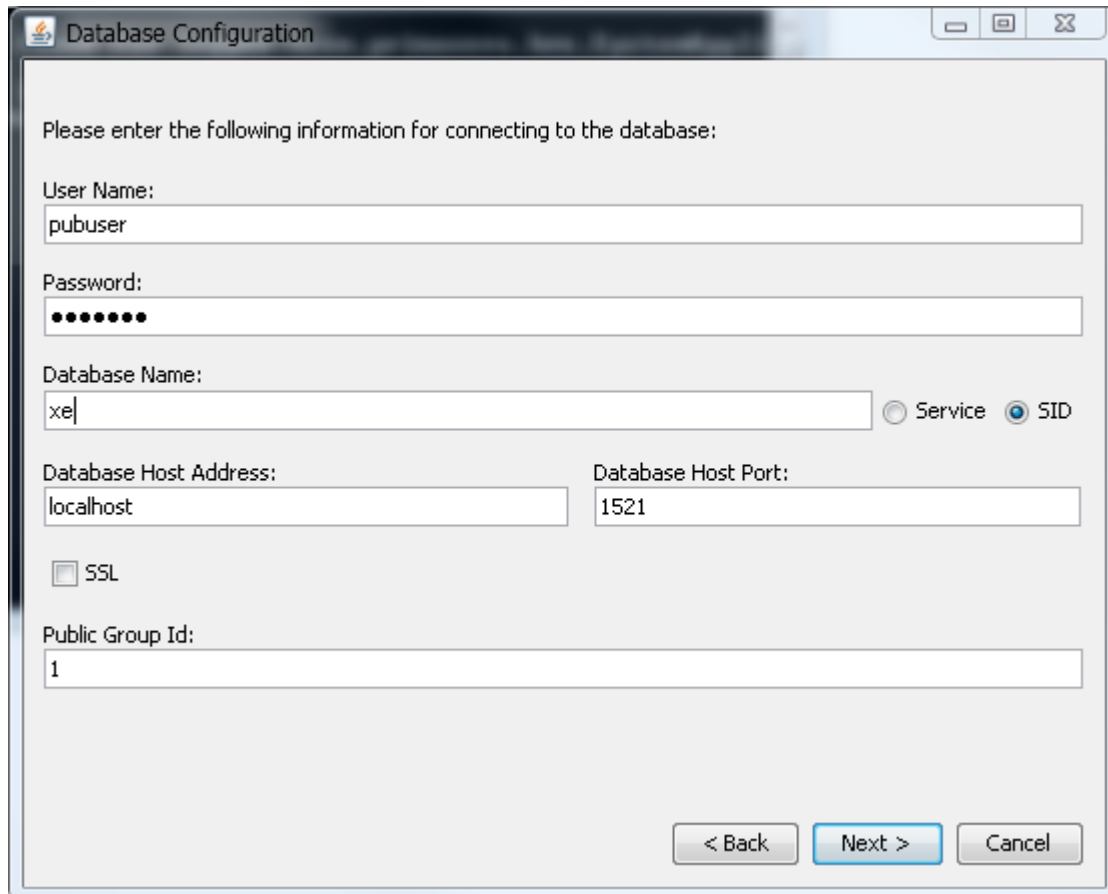
Fill the necessary information of your database. The information that is provided is an example.

Username: pubuser

Password: pubuser

Database Name : XE

Database Host adres: "localhost" if database is on the same machine as P6.



Database Configuration

Please enter the following information for connecting to the database:

User Name:  
pubuser

Password:  
••••••

Database Name:  
xe  Service  SID

Database Host Address: localhost Database Host Port: 1521

SSL

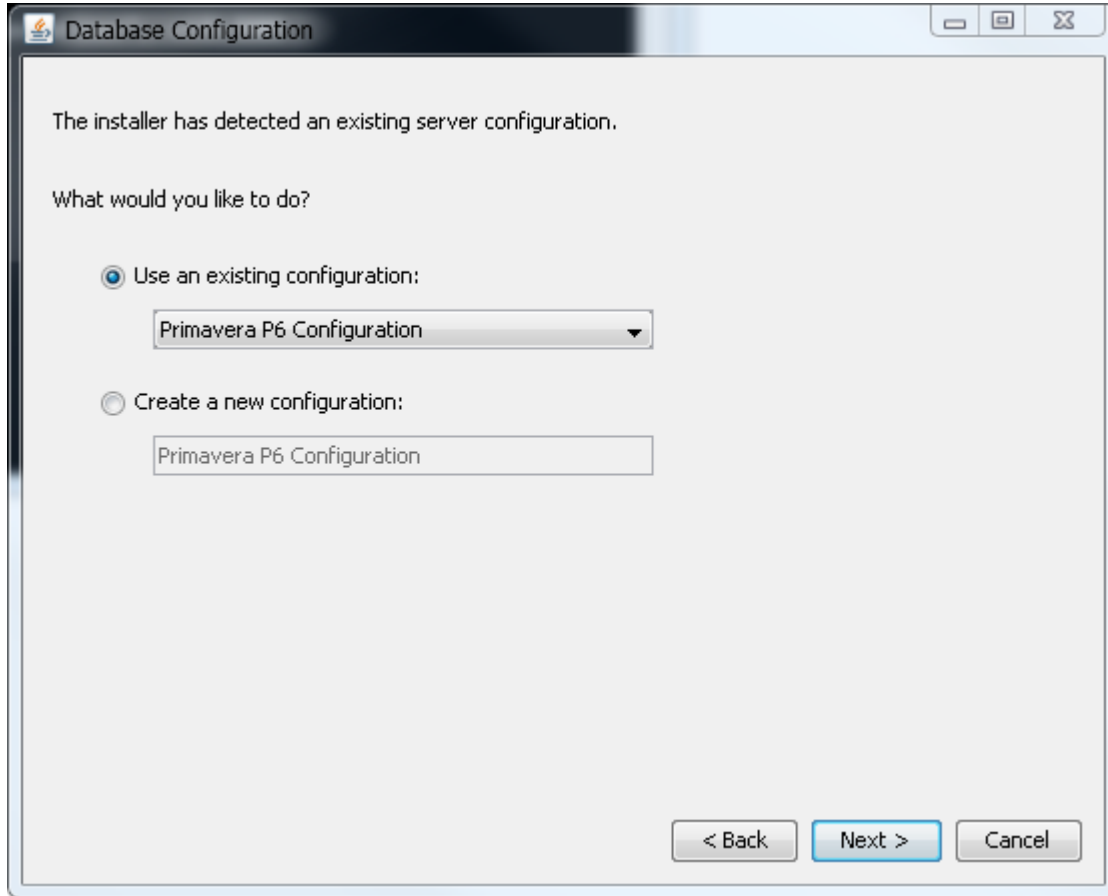
Public Group Id:  
1

< Back Next > Cancel

Click "Next".

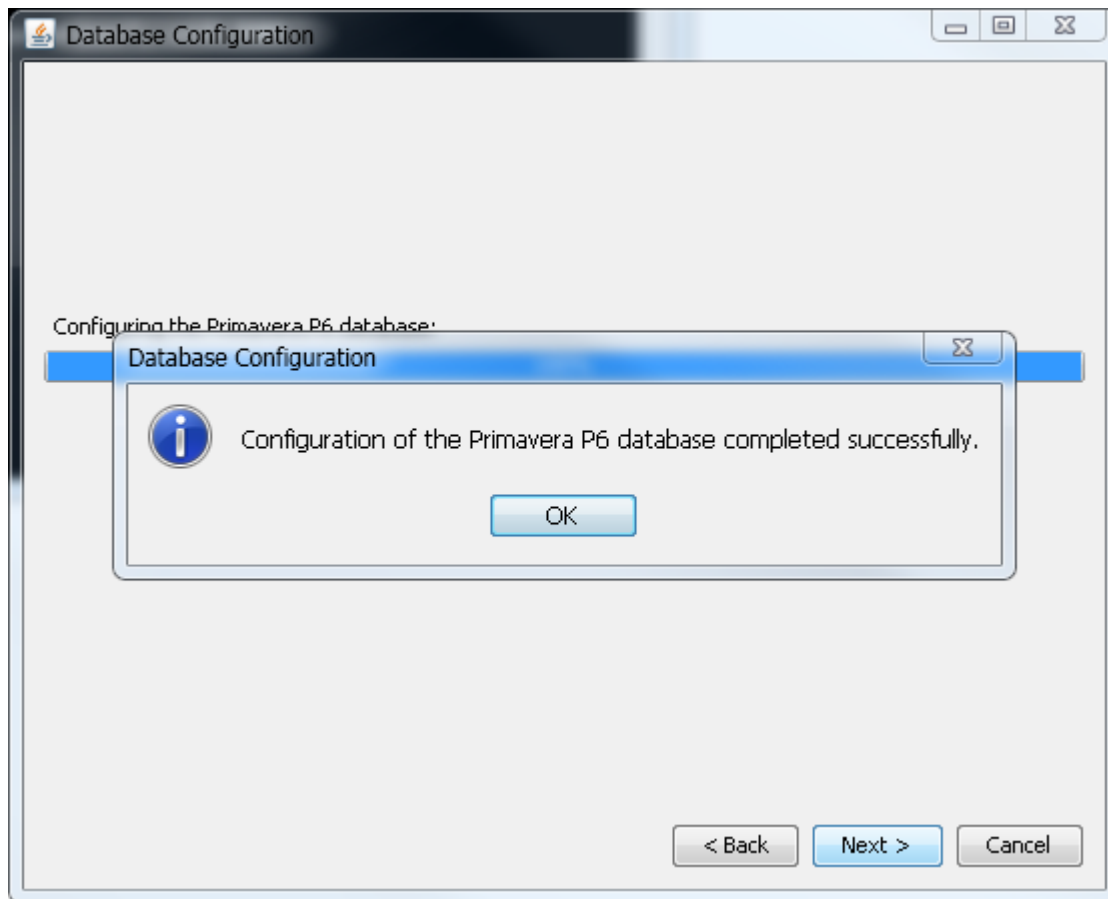
# PRM Transfer Installation

Choose an existing configuration that P6 uses and Click “Next”.



# PRM Transfer Installation

Click “OK” and finish the configuration



After the configuration there needs to file created in the installation folder (e.g. “C:\P6IntegrationAPI\_1”) named “BREBootStrap.xml”. If “BREBootStrap.xml” file is not created re-run “dbconfig.cmd” as administrator and proceed with the configuration.

## 3. PRM Transfer Installation

Download PRM Transfer Application from <http://apps.primavera-tr.com/>



# Welcome :)

[Download PRM Transfer Application](#) 

[Installation Instructions](#)

[Go to customers section](#)

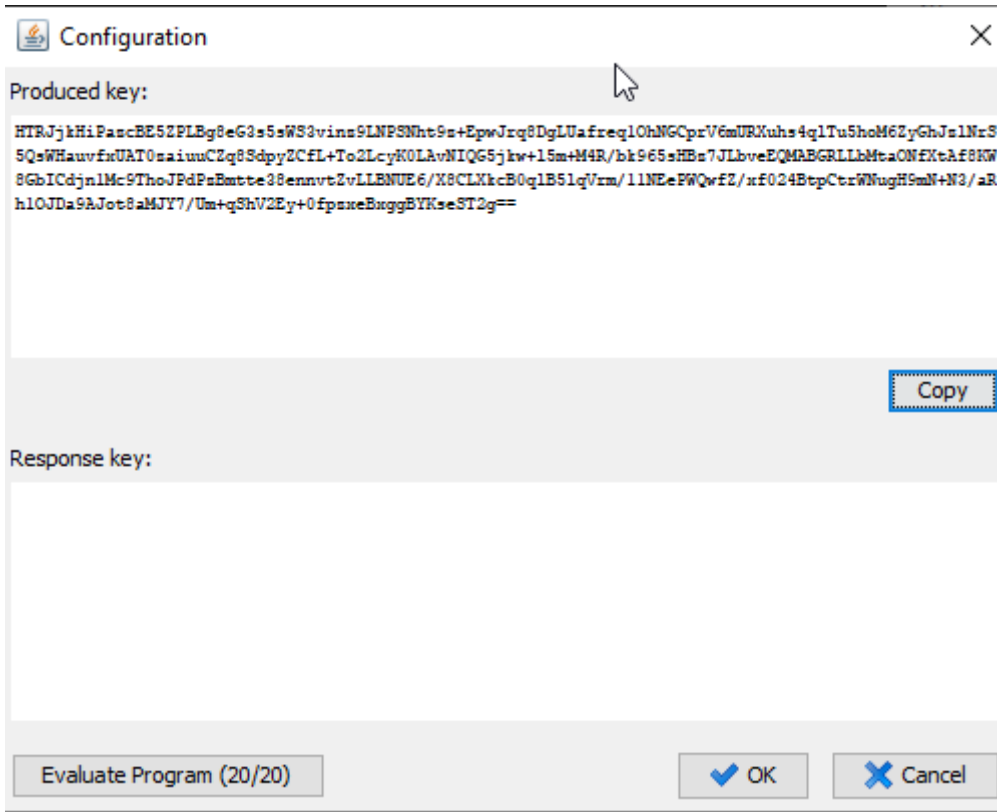
After downloading, unzip all of its contents to a folder.  
Run "PRMTransfer.exe" and click "Evaluate Program" if you did not purchase the program. You can run the program 20 times for evaluation purposes.

If you made a purchase, you can activate your license by logging in with your credentials from link the below.

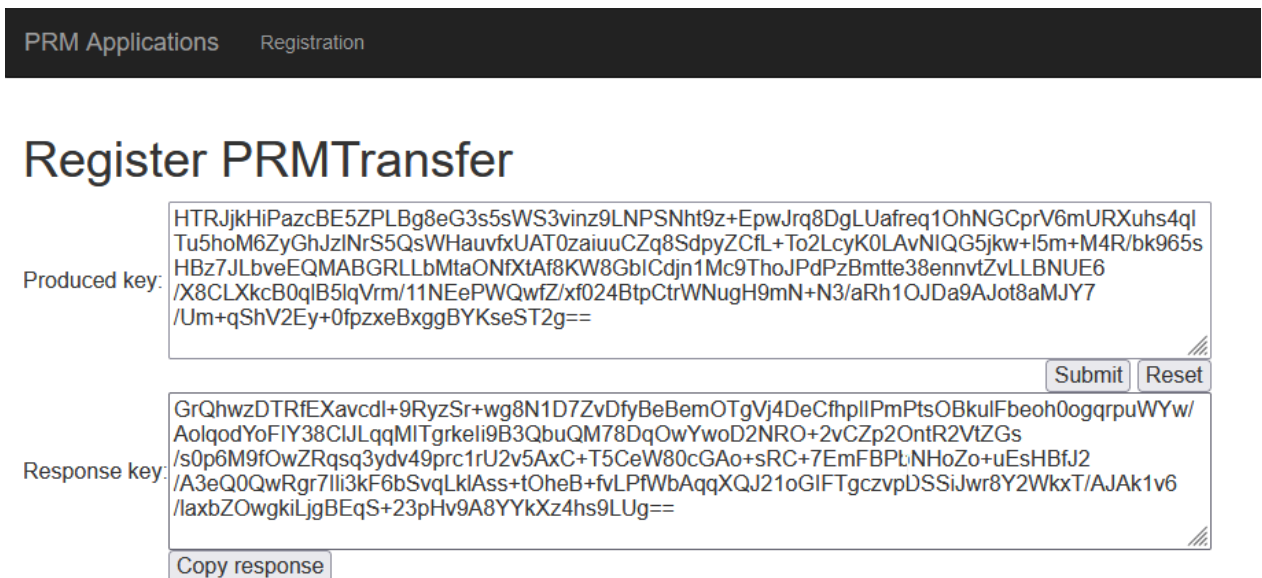
<http://apps.primavera-tr.com/login>

Run "PRMTransfer.exe" to access the configuration screen and copy the Produced key. (Do not close configuration screen until the activation is done.)

# PRM Transfer Installation

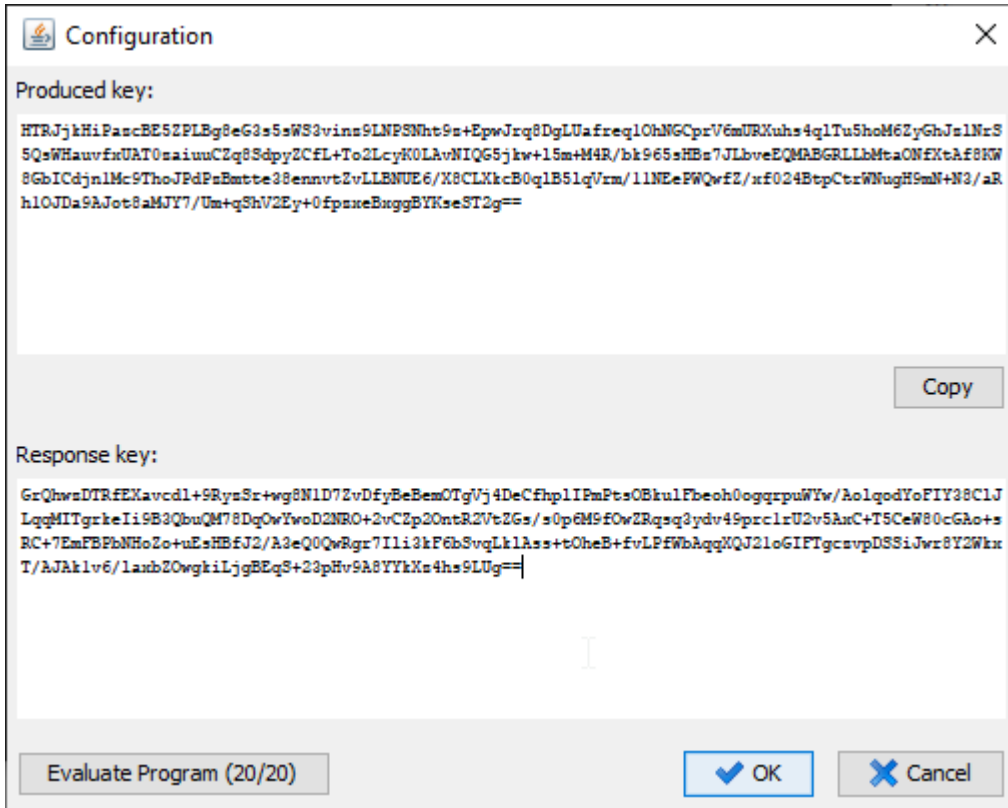


Paste the produced key to the area on <http://apps.primavera-tr.com/customers> after logging in and submit the create response key.



# PRM Transfer Installation

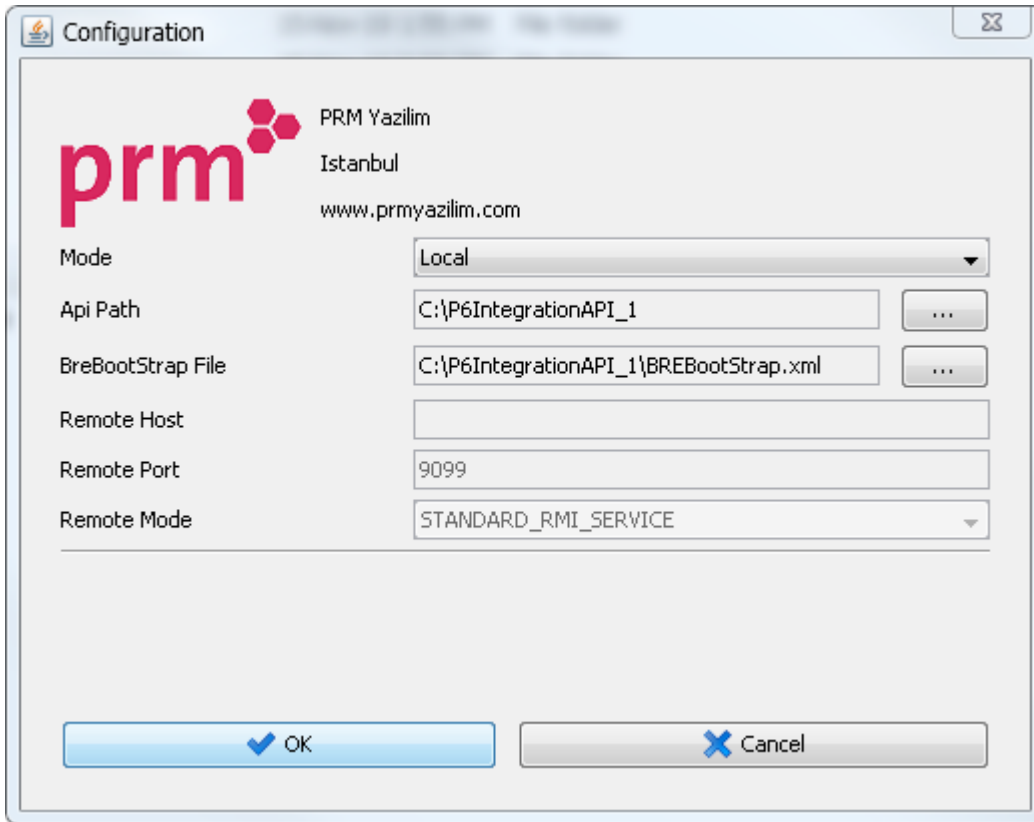
After getting the response key, copy and paste it to desired location in the configuration screen to register your program and click “OK”.



Next program will ask you Primavera P6 connection information.

For Local mode; choose P6 Api Path as the Integration API installation folder (e.g. “C:\P6IntegrationAPI\_1”) and choose “BREBootStrap.xml” location.

# PRM Transfer Installation

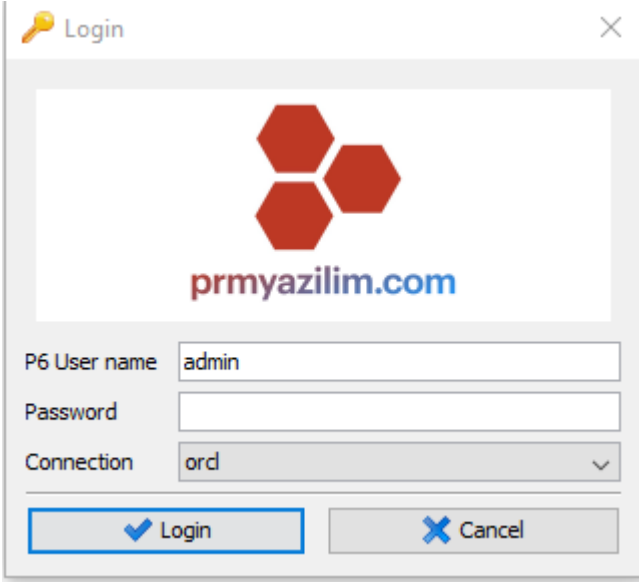


For Remote mode; select P6 Api Path and fill remote host, port and mode information.

## 4. Login

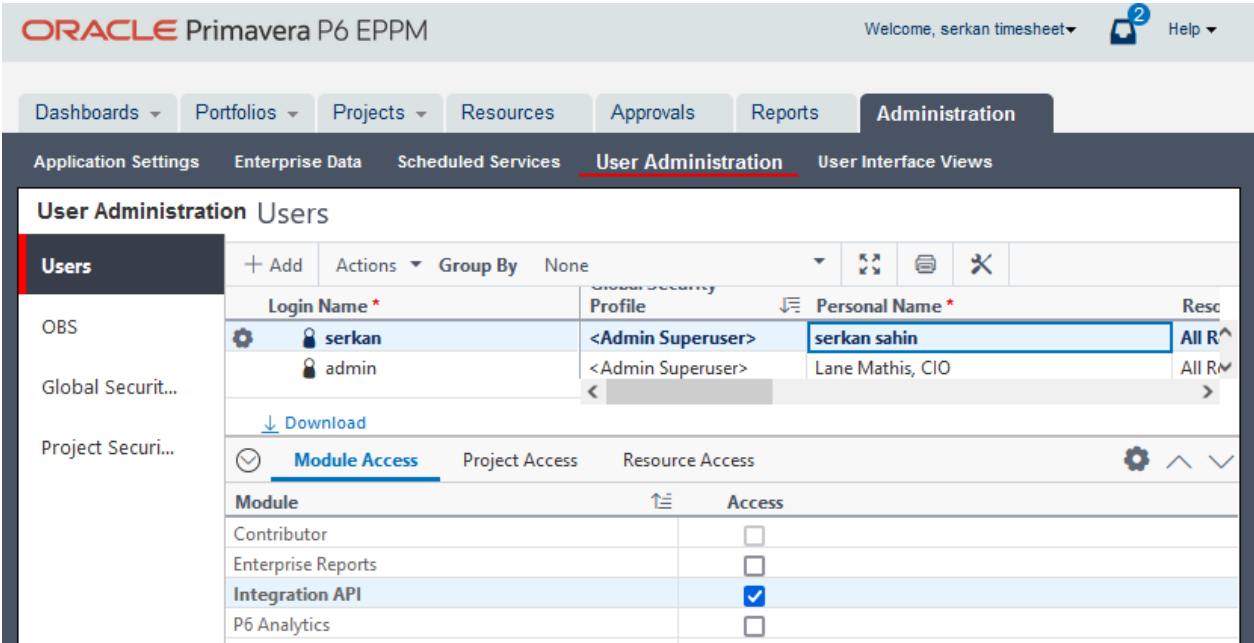
After the configuration is completed login screen will be displayed. You can login to program using the same credentials with your P6 application.

# PRM Transfer Installation



A login dialog box titled "Login" with a close button (X) in the top right corner. The dialog features the PRM logo (three red hexagons) and the website "prmyazilim.com". Below the logo are three input fields: "P6 User name" with the value "admin", "Password" (empty), and "Connection" with a dropdown menu showing "ord". At the bottom, there are two buttons: "Login" with a checkmark icon and "Cancel" with an X icon.

Your P6 user should have "Integration API" License assigned to use PRM Transfer.



The screenshot shows the Oracle Primavera P6 EPPM Administration interface. The top navigation bar includes "Dashboards", "Portfolios", "Projects", "Resources", "Approvals", "Reports", and "Administration". The "Administration" tab is active, showing sub-tabs for "Application Settings", "Enterprise Data", "Scheduled Services", "User Administration", and "User Interface Views". The "User Administration" sub-tab is selected, displaying a "Users" table. The table lists users "serkan" and "admin", both with the profile "<Admin Superuser>". The "serkan" user's personal name is "serkan sahin". Below the table, there is a "Module Access" section with a table showing access for various modules.

Module	Access
Contributor	<input type="checkbox"/>
Enterprise Reports	<input type="checkbox"/>
Integration API	<input checked="" type="checkbox"/>
P6 Analytics	<input type="checkbox"/>